

Eclipse Primefire 100 burners

Product brochure - US
7 Edition 05.15



ECLIPSE®

- Oxygen-fuel burner with a conventional flame shape
- Multiple-fuel capabilities (natural gas and light/heavy oils)
- Long and lazy flame
- High luminosity flame
- Lower flame temperature
- Conical adjustable flame shape
- Lower emissions (NO_x and particulates)
- Uniform heat distribution
- Low maintenance design

Applications

The Primefire 100 is a field proven oxygen-fuel burner. It has become an industry standard, providing greater flexibility, extended fuel firing capacity, increased melter efficiency, improved refractory life, and reduced melting cost. The Primefire 100 oxygen-fuel burner produces a conventional flame shape and has multiple-fuel capabilities (natural gas and light/heavy oils). The Primefire 100 burner is currently used in many glass and high temperature furnaces worldwide.

Design features

- Long and lazy flame
- High flame luminosity
- Lower flame temperature
- Conical, adjustable flame shape
- Lower emissions (NO_x and particulates)
- Uniform heat distribution
- No maintenance design
- Ideal for on-the-fly applications
- Proven field and laboratory performance
- Ability to switch from one fuel to another in a few minutes

Available sizes

(250,000 to 1,000,000 Btu/h) 73 to 293 kW

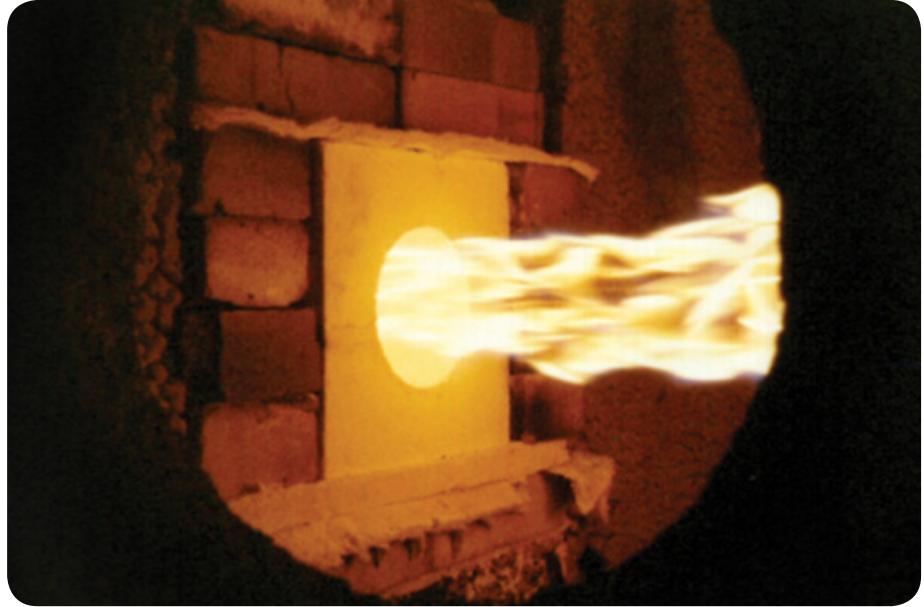
(750,000 to 3,000,000 Btu/h) 220 to 878 kW

(2,000,000 to 8,000,000 Btu/h) 586 to 2343 kW

(5,000,000 to 20,000,000 MM Btu/h) 1464 to 5857 kW

Typical applications include:

- Glass furnaces
- Copper frit
- Aluminum melting
- Steel
- Ceramics



Contact

www.eclipsenet.com → Sales

Eclipse, Inc.
1665 Elmwood Road
Rockford, IL 61103
USA

T +1 815 877-3031
info@eclipsenet.com
www.eclipsenet.com

We reserve the right to make technical modifications
in the interests of progress.
Copyright © 2015 Elster GmbH
All rights reserved.